

Invertek Global Solutions...

INVERTEK UK HEAD OFFICE

Invertek Drives Limited
Offas Dyke Business Park
Welshpool, Powys. UK
SY21 8JF

Tel: +44 (0) 1938 556868

Fax: +44 (0) 1938 556869

email:sales@invertek.co.uk

web:www.invertek.co.uk



Specification		OPTIDRIVE PLUS 3 ^{GV} Compact	
Output ratings	Power Ratings Available	0.75kW & 1.5kW	
	Overload Capacity	150% for 60 secs 175% for 2 secs	
	Output Frequency Range	0...2000Hz	
Input Ratings	Supply Frequency	48 - 62Hz	
	Supply Voltage	200 - 240V + / - 10% 1 Phase (0.75 - 1.5kW / 1 - 2HP) 380 - 480V + / - 10% 3 Phase (0.75 - 1.5kW / 1 - 2HP)	
Ambient Conditions	Temperature	Ambient & Heatsink Temperature : -10 to 60°C	
	Altitude	0 - 2000m, derate 1% per 100m above 1000m	
	Ingress Protection	IP00	
Programming	Optional External Keypad	Yes	
	Pocket PC / PDA	Yes	
Control Specification	Control Method	V / F 3 ^{GV} Sensorless Vector	
	V/Hz ratio	Linear (1 adjustment point)	
	Boost	Automatic after autotune	
	Stop Mode	Coast / Ramp / DC Brake	
	Skip Frequency	One point, adjustable frequency band	
	Frequency setpoint control		0...10 VDC
			+/- 10 VDC
			0...24 VDC
			4...20mA
			0...20mA
		Digital - Keypad RS485 (Master Slave)	
Pre-set speeds	8		
PID Control	Yes		
Spin Start	Yes		
Acceleration	0..3000 sec		
Deceleration	(2 ramps) 0..3000 sec		
Programmable I/O	Input 1	Programmable Digital Input	
	Input 2	Programmable Digital Input	
	Input 3	Programmable Digital / Analog Input	
	Input 4	Programmable Bipolar Analog / Digital Input	
	Relay 1	1 Relay Output (30 VDC 5A, 250 VAC, 6A)	
Keypad Display	Remote mount	Optional Optoport Plus remote mounting keypad	
Protective Functions	Inverter Trip	Over voltage	
		Over current	
Under voltage			
External trip			
Motor overload			
Over temperature			
Short circuited			
Earth Fault			
Under Voltage			
Memory		Last 4 Trips stored	
Compliance with Standards	EN 61800-3:2004	Adjustable speed electrical power drive systems. EMC requirements	
Additional Features Standards		Built in Master - Slave Operation Mode PID 'Sleep' Mode Energy Optimising Function	

INVERTEK CHINA SERVICE CENTRE

Invertek Drives
Shenyang Ltd
39 Gaoke Road
Hun Nan New District
Shenyang

Tel: 00 86 24 2378 6545
Fax: 00 86 24 2378 6546
email:manyongkui@163.com
web:www.invertek.co.uk

INVERTEK SPAIN

Tel: 00 34 93 860 06 15
Fax: 00 34 93 860 06 56
email:comercial@invertek.es
web:www.invertek.es

INVERTEK CZECH REPUBLIC

Tel: 00 420 251 556 663
Fax: 00 420 251 556 663
email:invertek@invertek.cz
web:www.invertek.cz

INVERTEK FAR EAST

Tel: 00 65 6867 9038
Fax: 00 65 6262 6961
email:invertek@singnet.com.sg
web:www.invertek.co.uk

OPTIDRIVE PLUS 3^{GV}

Compact

Dedicated OEM product

AC variable speed drive
0.75 - 1.5kW



OPTIDRIVE PLUS 3^{GV}

Compact

Dedicated OEM product

AC Variable Speed Drive 0.75 - 1.5kW

The Optidrive Plus 3^{GV} Compact is a revolutionary new variable speed drive designed for OEM users who require a simple module in a compact package which can be easily and efficiently integrated into an overall system.

Utilising the very latest technology and manufacturing techniques, the Optidrive Plus 3^{GV} Compact offers unrivalled durability and performance. The mechanical design has been specifically designed to allow the OEM to mount the unit simply on any metallic surface allowing efficient heat sinking for optimum ease of installation.

The inverter specification is based on the successful Optidrive Plus 3^{GV} range and offers the same class leading Open Loop Vector high performance motor control, providing optimum control of motor speed and torque. Commissioning can be carried out using the optional Optiport Plus remote keypad and display, or using Invertek's Optiwand PDA software package for Pocket PC's. The onboard Infra Red interface allows multiple modules to be quickly commissioned or cloned without the need for cables or interface leads.

Pluggable terminals are fitted for control connections, to ease wiring, whilst an onboard 24 Volt DC Power supply can be used for external control circuits. The Optidrive Plus 3^{GV} Compact can optionally be supplied with an internal RFI filter, to allow compliance with the latest directives where required.

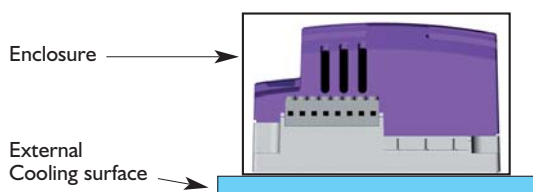


Key Features and Benefits

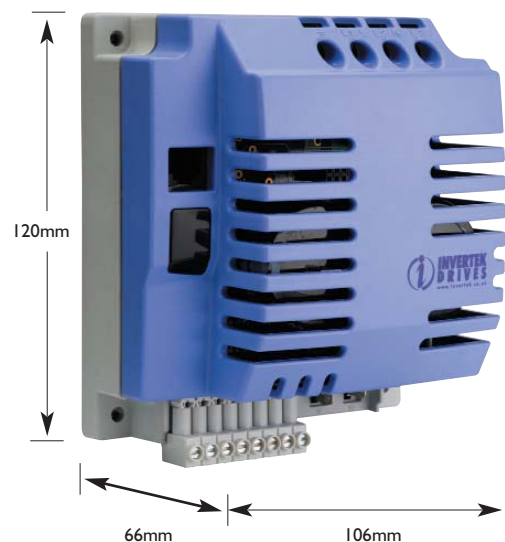
- Lightweight, compact 'Cool Plate' design for easy OEM integration
- Extremely robust with high vibration resistance
- Full Open Loop Vector motor control for optimum motor performance in demanding applications
- Excellent thermal management
- Pluggable control terminals
- Fast-on power terminals

Designed for compact enclosures

Unique design enables the drive to be mounted into small enclosures transferring heat through the rear face for dissipation

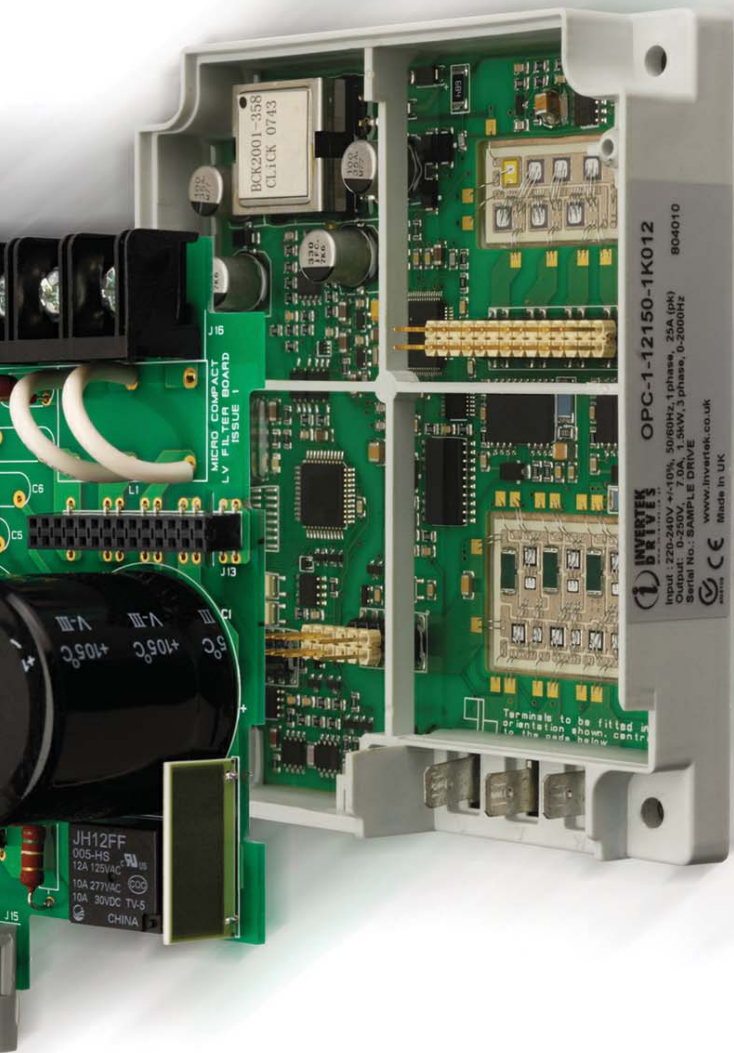


Specifications & Dimensions



Control terminals

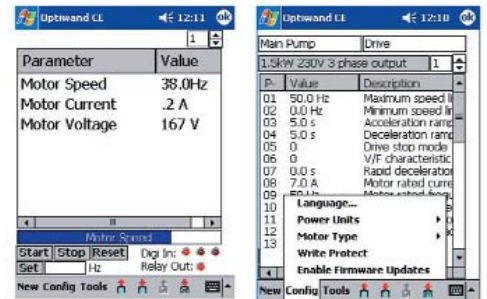
1. 24V out
2. Digital input 1
3. Digital input 2
4. Analog input 1
5. Analog input 2
6. 0V
7. Relay output
8. Relay output



Optiwand PDA



Hand held remote programming tool, Optiwand PDA operates on a Windows Mobile based pocket PC with Optidrive Plus 3^{GV} Compact for programming and commissioning using the IrDA interface.



Parameters can be quickly monitored and adjusted, with online help and plain text parameter descriptions. The complete parameter set can then be uploaded or downloaded, allowing fast and accurate back up storage and commissioning for multiple drives.

Control Connections



Power Input Terminals



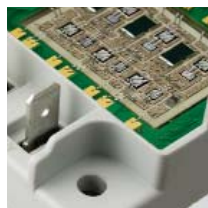
Motor Output Terminals



RJ11 Connector



Infra Red Interface



Mounting holes in corners.
4.3mm diameter,
2.5Nm Max



< design without compromise >